

Terravision Radar presentation on
Surveying over Ice

January 2014

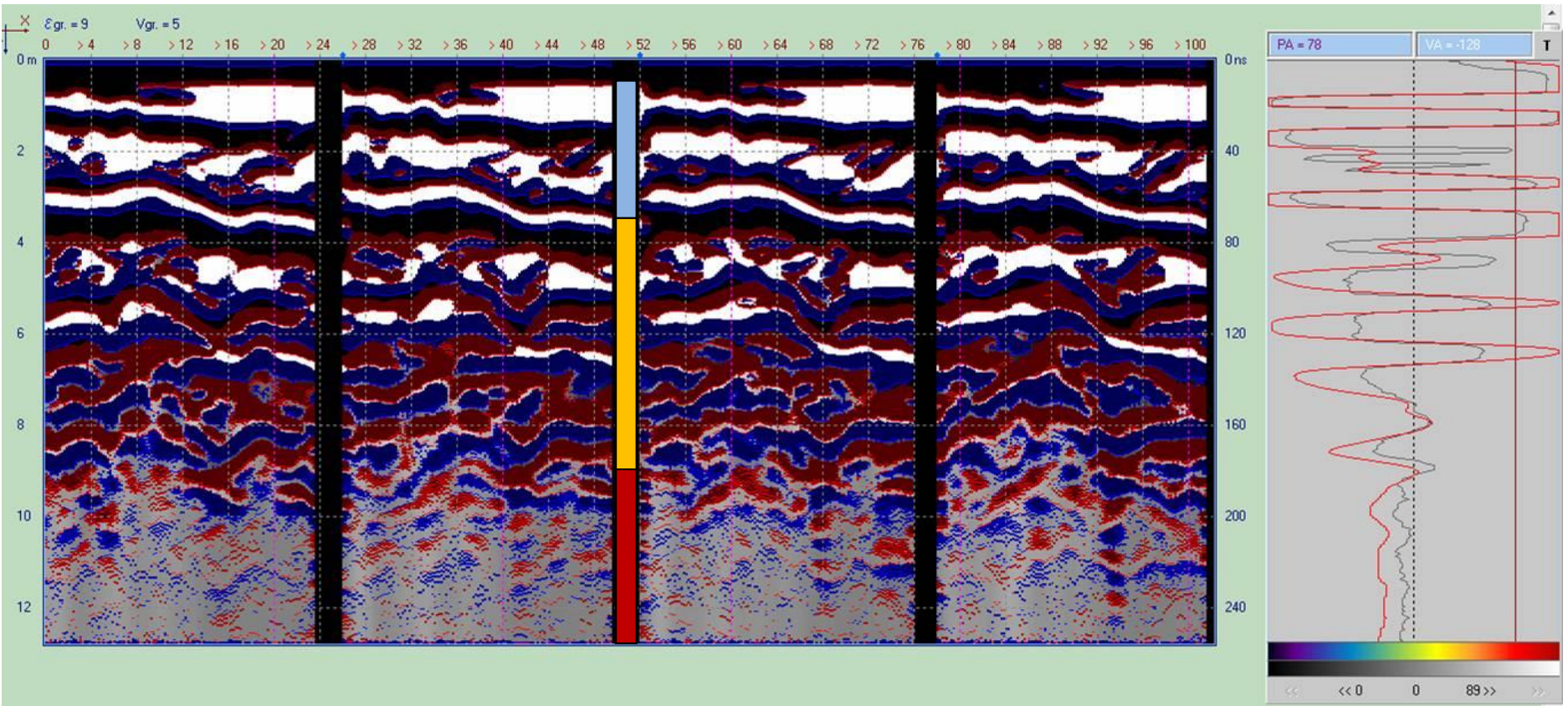
www.terravisionradar.com

What is Terravision Radar?

- **Terravision Radar is built on similar principles to ground-penetrating radar but is substantially more powerful, by combining up to 20MW mono-pulse, multi-frequency approach, allowing for depth penetration to up to 200m+.**
- **Terravision maps the geo-electrophysical nature of the subsurface.**
- **Profiles outline features such as alluvial horizons, geological structure, location of bedrock, paleo-environment, and contact zones.**
- **Data Collection: Fast – up to 4km of profiles a day conditions dependent.**
- **Deliver “Real Time” reporting via our operators display unit.**
- **Terravision operators can analyse and interpret data within hours of collection.**
- **Terravision is light-weight and versatile; 2 operators and circa 150kg kit (job specific) we can deploy in 4x4 vehicles & light aircraft**



TERRAVISION
INTELLIGENT EXPLORATION



- ICE
- ALLUVIUM
- ROCK

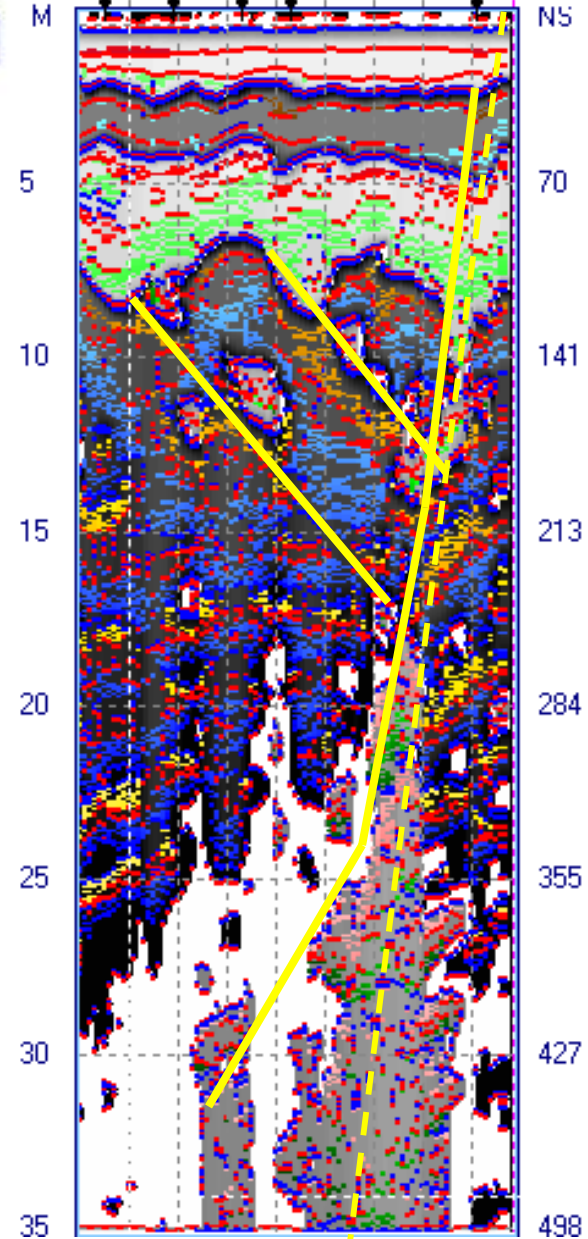
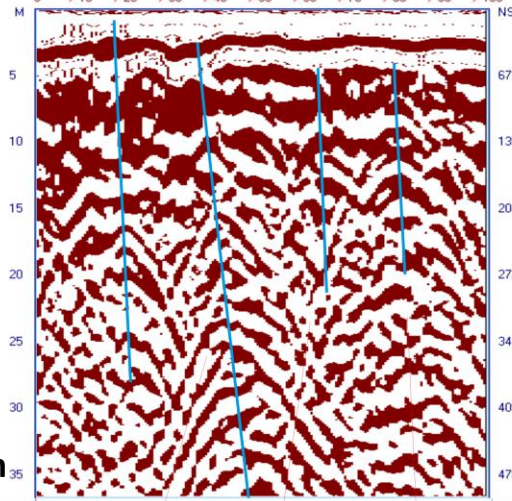
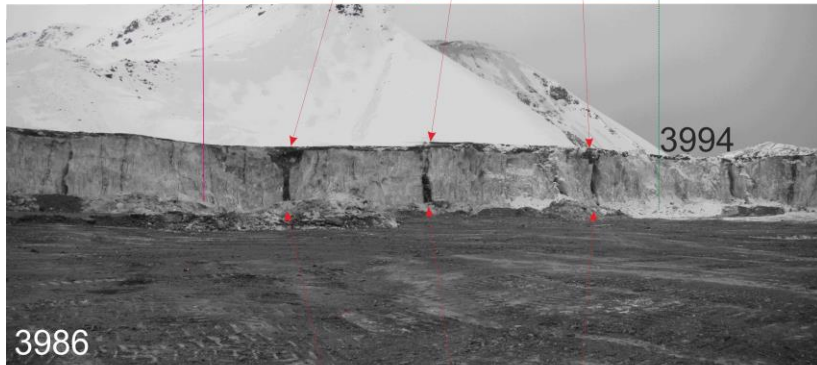


Distance 100m

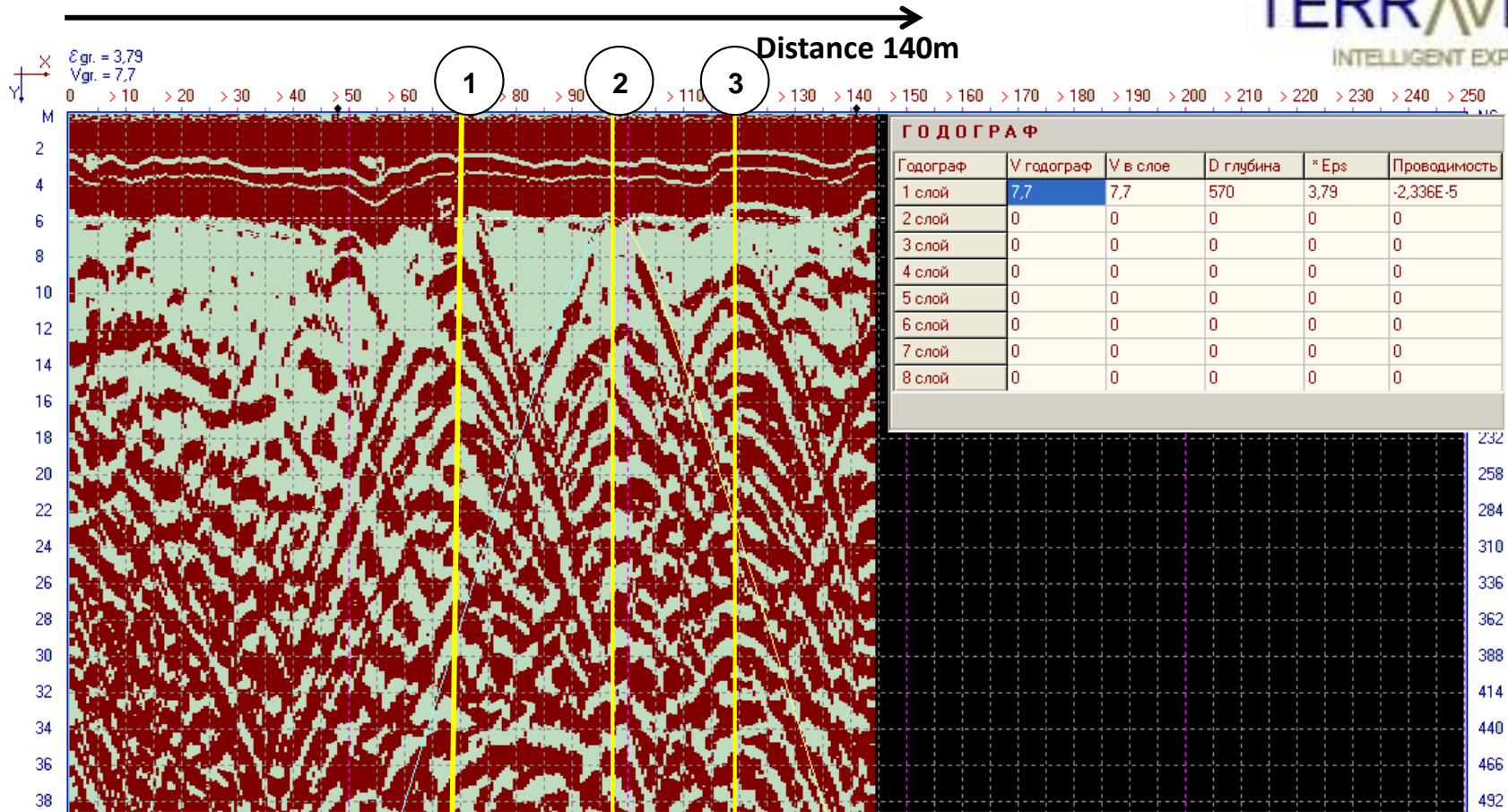
TERRAVISION
INTELLIGENT EXPLORATION

Distance 30m

Depth 35m



Terravision regularly carry out surveys for structural details in ice



Depth 40m

3 Cracks recorded in the ice

ПАНЕЛЬ ОПЦИЙ

Изменить по оси X
 Сгладить пиксель
 Изменить метку

Параметры
 Фильтры
 Границы
 Сложение
 3D

Глубина профиля: 512 ns
Шаг профиля cm: 50 cm
Шаг по глубине: 200 cm
D между Антеннами: 100 cm
Кадров в профиле: []

Фильтр 1: НЧ 1, L = 0, H = 0, X = 0
Фильтр 2: ВЧ 1, L = 15, H = 15, X = 0

Количество цветов: 2 Цвета
 Инверсия
 Лог. Обработка
 Выбрать значение амплитуды
 Числен. Числения амплитуды

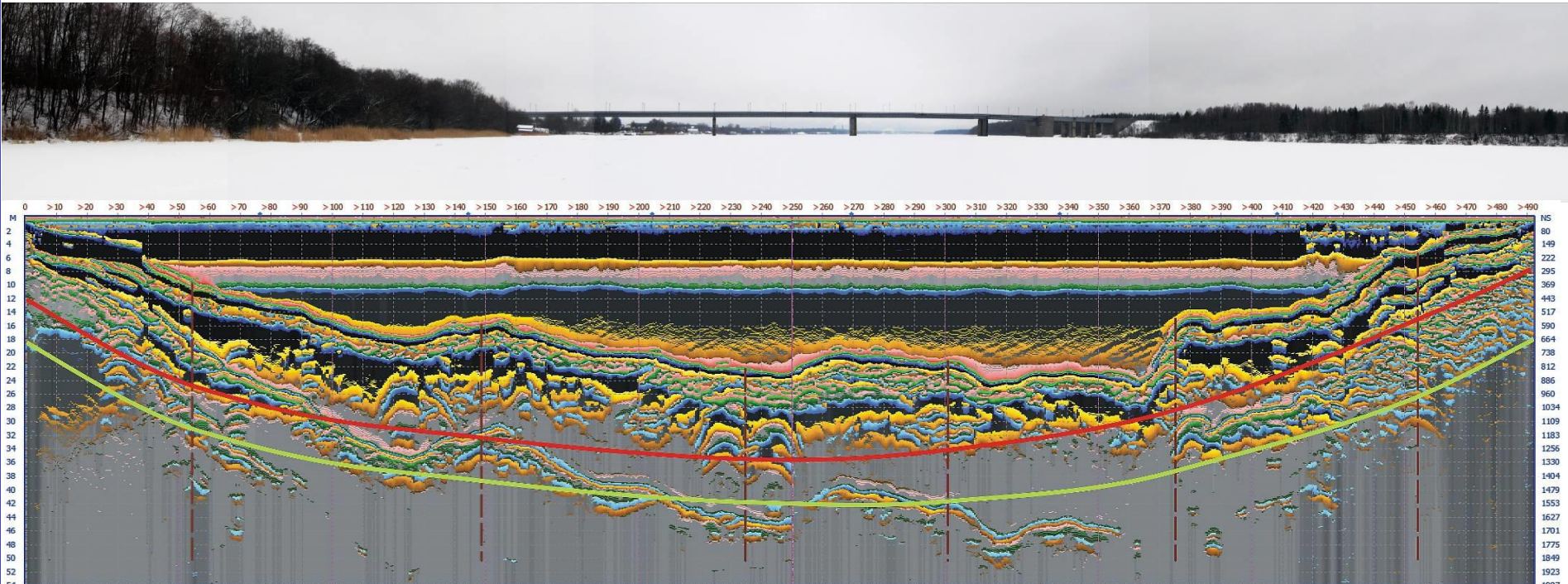
Авто Запись ТП
 Прямая Запись ТП
 Авто Запись ТК

Метод обработки 3D: По оси = X
D между Профилями: 20 cm
Глубина обработки: 4 ns



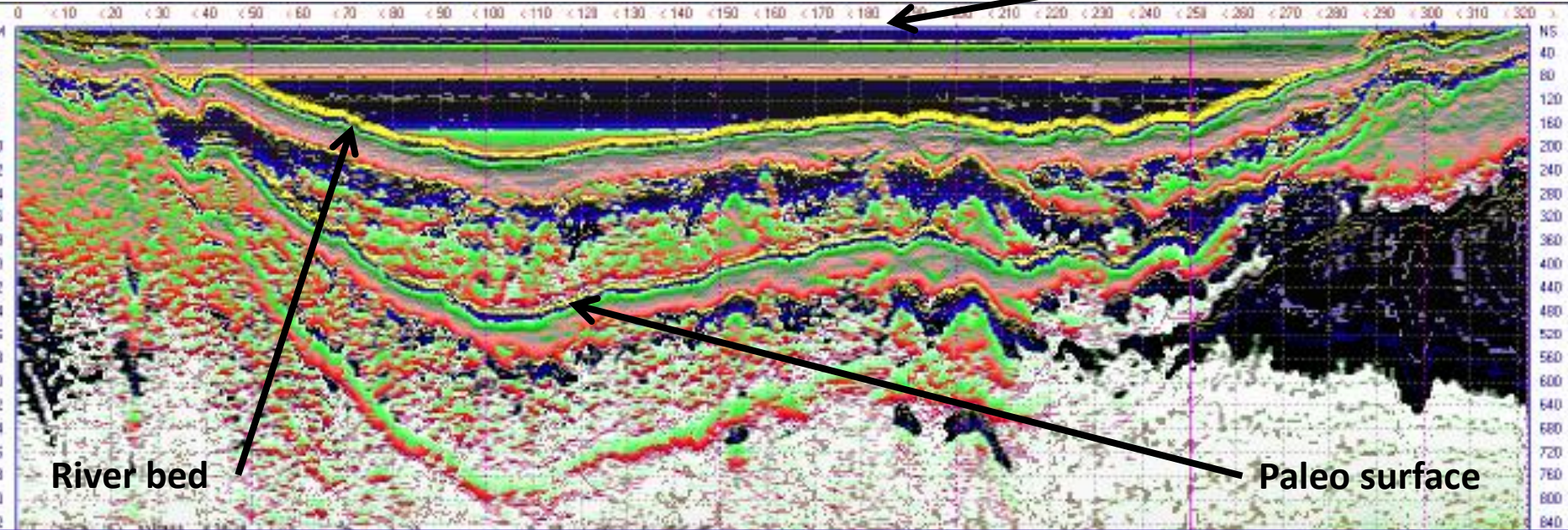
Survey for the laying of a gas pipeline under a River in Russia

The survey showed that the original course of the gas pipeline (red line) would pass through granite. The course of the pipeline has redesigned so that construction would not need to pass through the granite related structures.



Surveying a river and paleo-surfaces

River surface



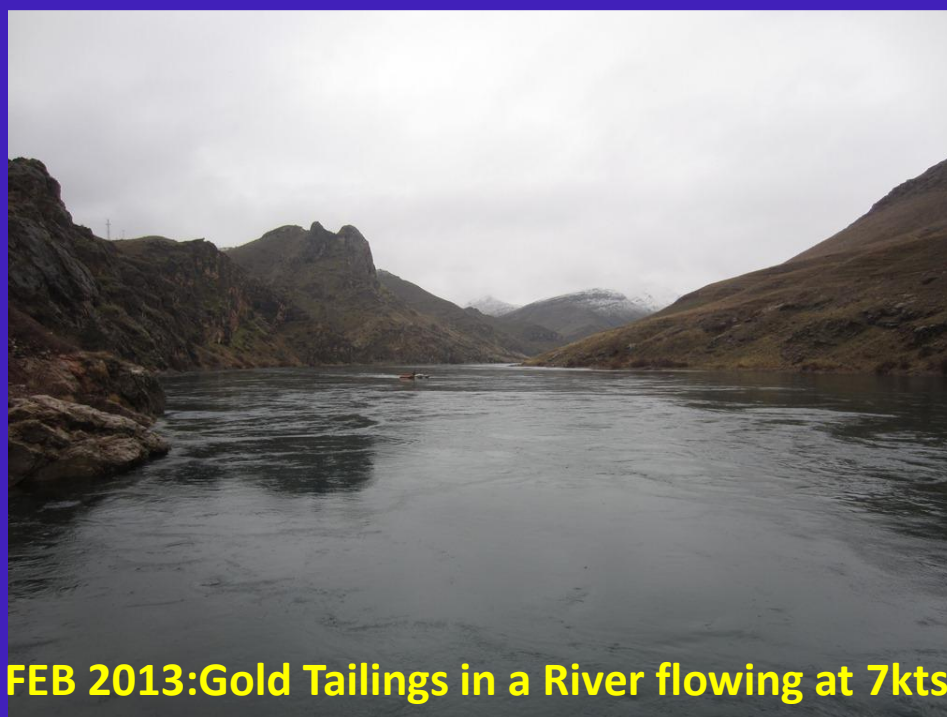
Working Over Water

Terravision Radar can be deployed over water using inflatable waterproof covers. The group has experience of surveying rivers and lakes, assisting pipe and cable laying groups, and alluvial mining teams.

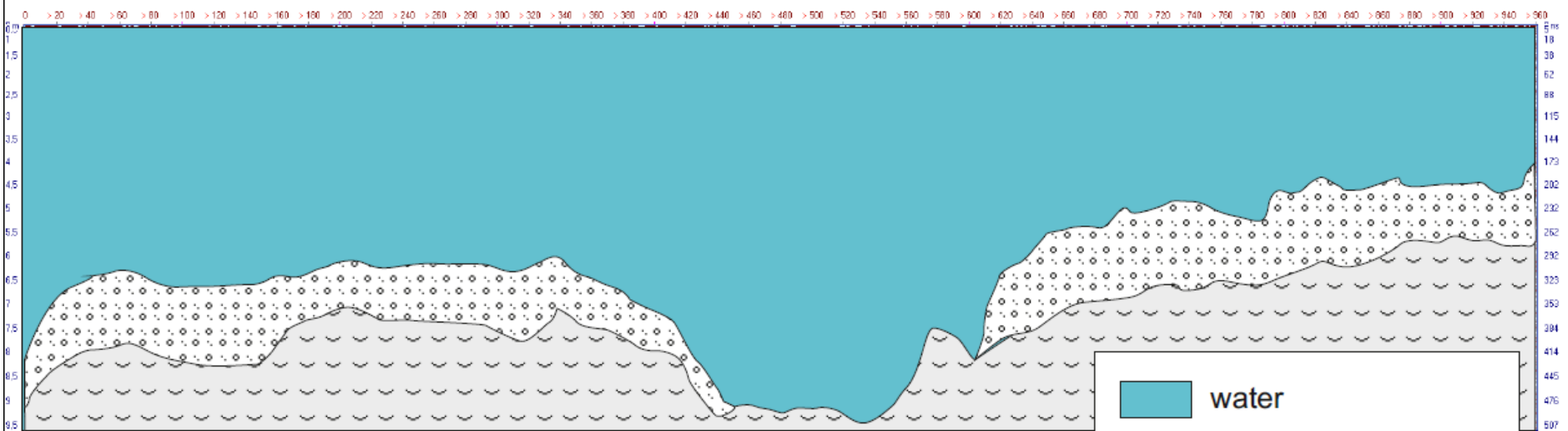
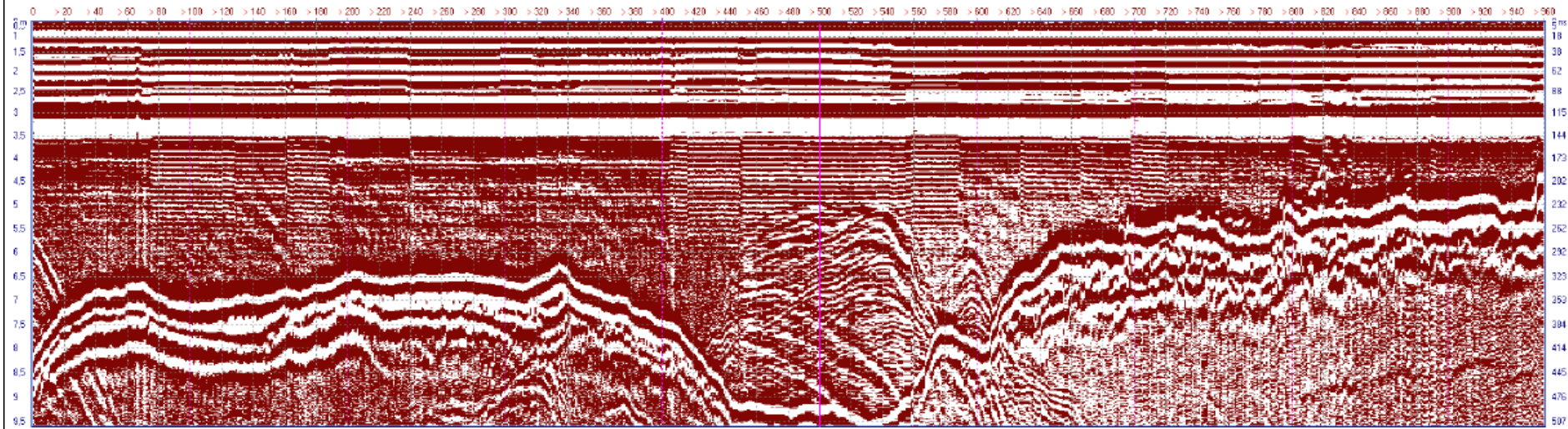


Assessing the deposition of sediments in a canal lock





FEB 2013:Gold Tailings in a River flowing at 7kts



FEB 2013: Gold Tailings in a River flowing at 7kts



For further information and enquiries,
please visit the website for contact details or email

info@terravisionradar.com

www.terravisionradar.com